

Notre Dame High School\_11062021 R2

## Content

Cover page .....	1
Content .....	2
Images .....	3
Luminaire list .....	5

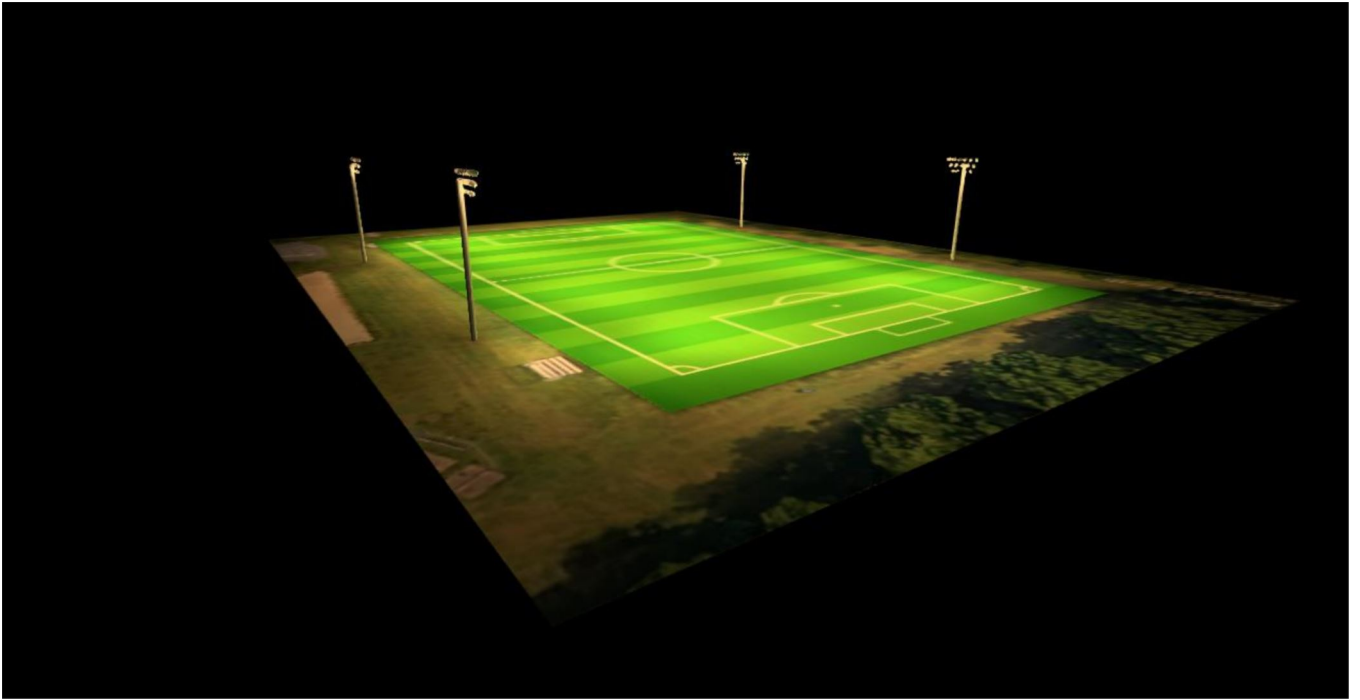
## Site 1

Luminaire layout plan .....	6
Calculation objects .....	12
Calculation surface 1 / Perpendicular illuminance .....	14
outside Light Spillage @ 20ft / Perpendicular illuminance .....	15

# Images



## Images



## Luminaire list

$\Phi_{total}$ 4677600 lm	$P_{total}$ 30000.0 W	Luminous efficacy 155.9 lm/W
------------------------------	--------------------------	---------------------------------

pcs.	Manufacturer	Article No.	Article name	P	$\Phi$	Luminous efficacy
44	IKIO LED LIGHTING		DYNAMO 3 STADIUM FLOOD LIGHT	500.0 W	77960 lm	155.9 lm/W
16	IKIO LED LIGHTING		Dynamo 3 Stadium Flood Light	500.0 W	77960 lm	155.9 lm/W

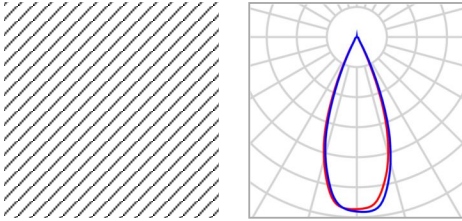
Site 1

# Luminaire layout plan



Site 1

## Luminaire layout plan



Manufacturer	IKIO LED LIGHTING
Article name	DYNAMO 3 STADIUM FLOOD LIGHT

### 15 x IKIO LED LIGHTING DYNAMO 3 STADIUM FLOOD LIGHT

Type	Field Arrangement	X	Y	Mounting height	Luminaire
1st luminaire (X/Y/Z)	295.146 ft / 280.234 ft / 52.872 ft	295.146 ft	280.234 ft	52.872 ft	1
X-direction	6 pcs., Center - center, Distances not equal	298.085 ft	280.234 ft	52.872 ft	2
		301.024 ft	280.234 ft	52.872 ft	3
Y-direction	3 pcs., Center - center, Distances not equal	299.595 ft	280.234 ft	49.961 ft	4
		302.534 ft	280.234 ft	49.961 ft	5
Arrangement	A1	305.473 ft	280.234 ft	49.961 ft	8
		292.207 ft	280.234 ft	52.872 ft	9
		303.963 ft	280.234 ft	52.872 ft	10
		306.902 ft	280.234 ft	52.872 ft	11
		296.657 ft	280.234 ft	49.961 ft	13
		293.718 ft	280.234 ft	49.961 ft	14

### 15 x IKIO LED LIGHTING DYNAMO 3 STADIUM FLOOD LIGHT

Type	Field Arrangement
------	-------------------

Site 1

### Luminaire layout plan

1st luminaire (X/Y/Z)	130.711 ft / 280.234 ft / 52.872 ft	X	Y	Mounting height	Luminaire
X-direction	6 pcs., Center - center, Distances not equal	130.711 ft	280.234 ft	52.872 ft	16
		133.650 ft	280.234 ft	52.872 ft	17
Y-direction	3 pcs., Center - center, Distances not equal	136.589 ft	280.234 ft	52.872 ft	18
		129.283 ft	280.234 ft	49.961 ft	19
Arrangement	A2	132.222 ft	280.234 ft	49.961 ft	20
		135.161 ft	280.234 ft	49.961 ft	21
		138.100 ft	280.234 ft	49.961 ft	22
		141.039 ft	280.234 ft	49.961 ft	27
		127.772 ft	280.234 ft	52.872 ft	28
		139.528 ft	280.234 ft	52.872 ft	29
		142.467 ft	280.234 ft	52.872 ft	30

### 15 x IKIO LED LIGHTING DYNAMO 3 STADIUM FLOOD LIGHT

Type	Field Arrangement	X	Y	Mounting height	Luminaire
1st luminaire (X/Y/Z)	139.557 ft / 43.253 ft / 52.872 ft	139.557 ft	43.253 ft	52.872 ft	31
X-direction	6 pcs., Center - center, Distances not equal	136.618 ft	43.253 ft	52.872 ft	32
		133.679 ft	43.253 ft	52.872 ft	33
Y-direction	3 pcs., Center - center, Distances not equal	140.985 ft	43.253 ft	49.961 ft	34
		138.046 ft	43.253 ft	49.961 ft	35
Arrangement	A3	135.107 ft	43.253 ft	49.961 ft	36
		132.168 ft	43.253 ft	49.961 ft	37
		129.229 ft	43.253 ft	49.961 ft	42
		142.496 ft	43.253 ft	52.872 ft	43
		130.740 ft	43.253 ft	52.872 ft	44



Site 1

## Luminaire layout plan

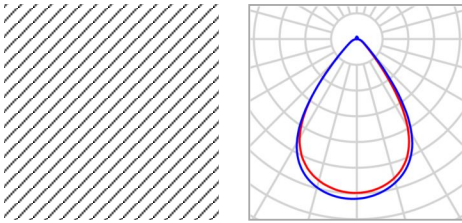
X	Y	Mounting height	Luminaire
127.801 ft	43.253 ft	52.872 ft	45

### 15 x IKIO LED LIGHTING DYNAMO 3 STADIUM FLOOD LIGHT

Type	Field Arrangement	X	Y	Mounting height	Luminaire
1st luminaire (X/Y/Z)	314.423 ft / 43.253 ft / 52.872 ft	314.423 ft	43.253 ft	52.872 ft	46
X-direction	6 pcs., Center - center, Distances not equal	311.484 ft	43.253 ft	52.872 ft	47
		308.545 ft	43.253 ft	52.872 ft	48
Y-direction	3 pcs., Center - center, Distances not equal	315.852 ft	43.253 ft	49.961 ft	49
		312.913 ft	43.253 ft	49.961 ft	50
Arrangement	A4	309.974 ft	43.253 ft	49.961 ft	51
		307.035 ft	43.253 ft	49.961 ft	52
		304.096 ft	43.253 ft	49.961 ft	57
		317.362 ft	43.253 ft	52.872 ft	58
		305.606 ft	43.253 ft	52.872 ft	59
		302.668 ft	43.253 ft	52.872 ft	60

Site 1

## Luminaire layout plan



Manufacturer	IKIO LED LIGHTING
Article No.	
Article name	Dynamo 3 Stadium Flood Light

### 15 x IKIO LED LIGHTING DYNAMO 3 STADIUM FLOOD LIGHT

Type	Field Arrangement	X	Y	Mounting height	Luminaire
1st luminaire (X/Y/Z)	297.327 ft / 280.234 ft / 47.050 ft	297.327 ft	280.234 ft	47.050 ft	6
X-direction	6 pcs., Center - center, Distances not equal	301.592 ft	280.234 ft	47.050 ft	7
		303.963 ft	280.234 ft	47.050 ft	12
Y-direction	3 pcs., Center - center, Distances not equal	295.146 ft	280.234 ft	47.050 ft	15
Arrangement	A1				

### 15 x IKIO LED LIGHTING DYNAMO 3 STADIUM FLOOD LIGHT

Type	Field Arrangement	X	Y	Mounting height	Luminaire
1st luminaire (X/Y/Z)	130.711 ft / 280.234 ft / 47.050 ft	130.711 ft	280.234 ft	47.050 ft	23
X-direction	6 pcs., Center - center, Distances not equal	132.892 ft	280.234 ft	47.050 ft	24
		137.157 ft	280.234 ft	47.050 ft	25
Y-direction	3 pcs., Center - center, Distances not equal	139.528 ft	280.234 ft	47.050 ft	26

Site 1

## Luminaire layout plan

Arrangement A2

---

### 15 x IKIO LED LIGHTING DYNAMO 3 STADIUM FLOOD LIGHT

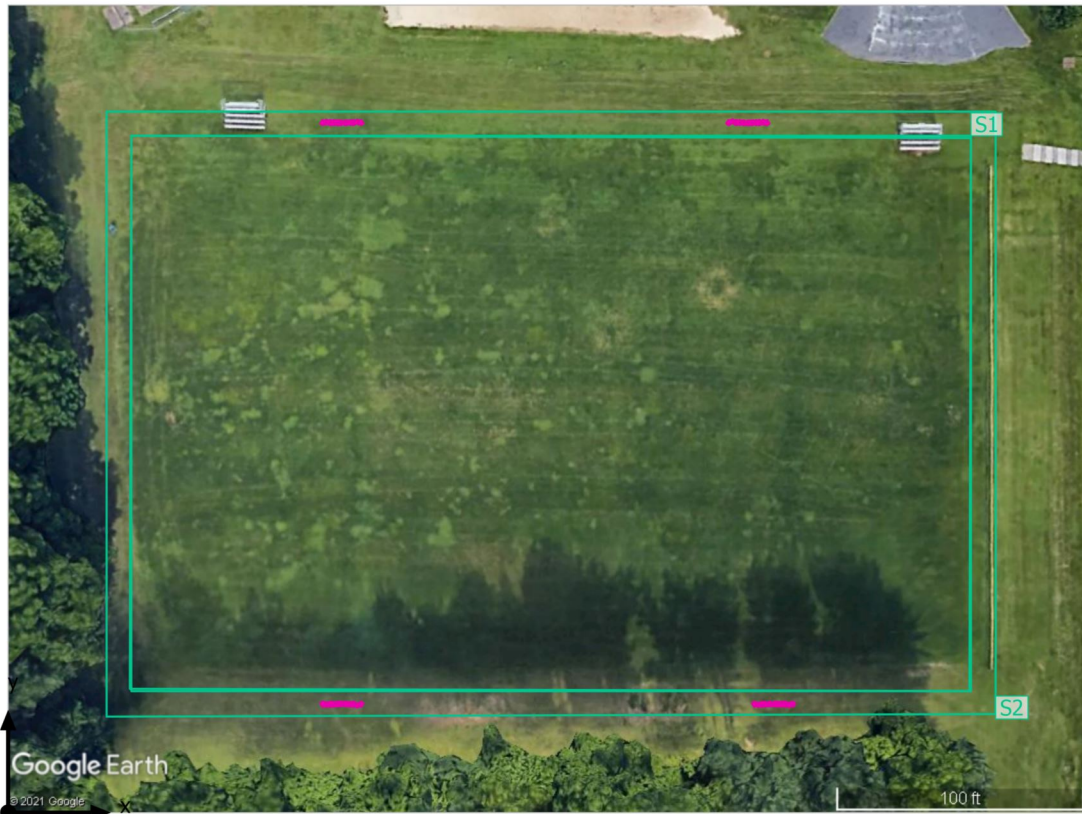
Type	Field Arrangement	X	Y	Mounting height	Luminaire
1st luminaire (X/Y/Z)	139.557 ft / 43.253 ft / 47.050 ft	139.557 ft	43.253 ft	47.050 ft	38
X-direction	6 pcs., Center - center, Distances not equal	137.376 ft	43.253 ft	47.050 ft	39
		133.111 ft	43.253 ft	47.050 ft	40
Y-direction	3 pcs., Center - center, Distances not equal	130.740 ft	43.253 ft	47.050 ft	41
Arrangement	A3				

### 15 x IKIO LED LIGHTING DYNAMO 3 STADIUM FLOOD LIGHT

Type	Field Arrangement	X	Y	Mounting height	Luminaire
1st luminaire (X/Y/Z)	314.423 ft / 43.253 ft / 47.050 ft	314.423 ft	43.253 ft	47.050 ft	53
X-direction	6 pcs., Center - center, Distances not equal	312.243 ft	43.253 ft	47.050 ft	54
		307.978 ft	43.253 ft	47.050 ft	55
Y-direction	3 pcs., Center - center, Distances not equal	305.606 ft	43.253 ft	47.050 ft	56
Arrangement	A4				

Site 1

### Calculation objects



Site 1

## Calculation objects

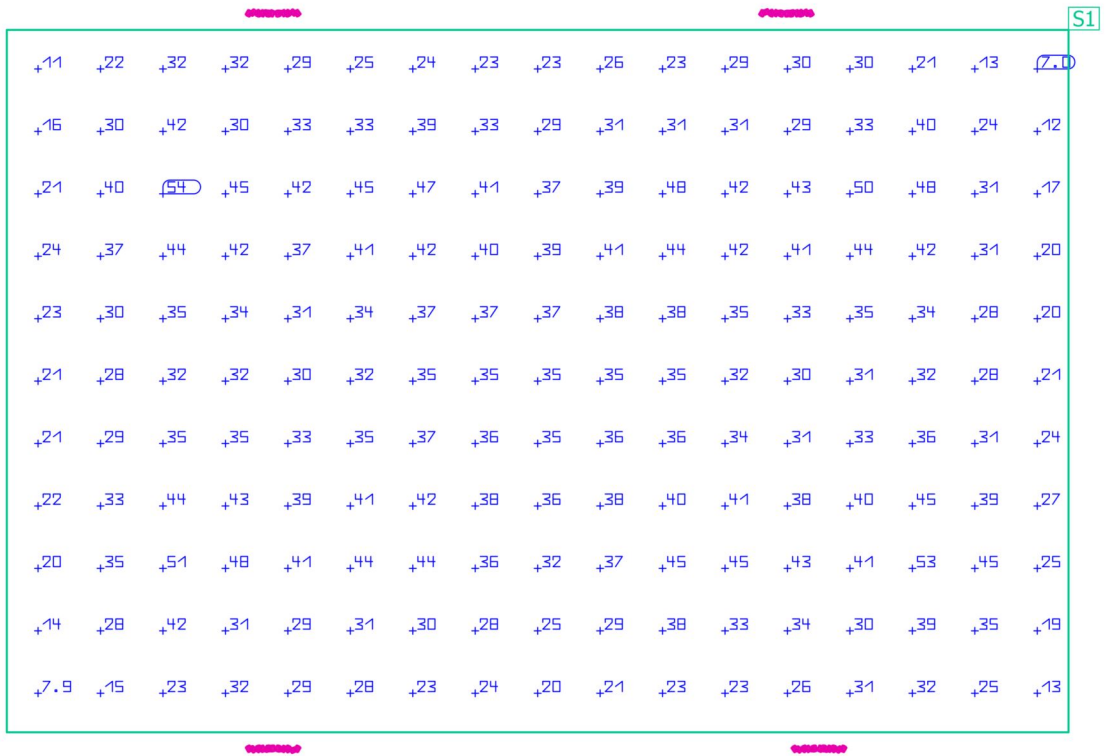
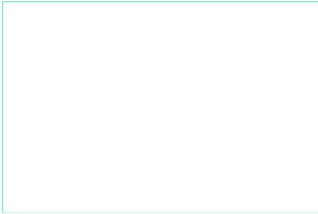
### Calculation surfaces

Properties	$\bar{E}$	$E_{min}$	$E_{max}$	$\bar{E}/E_{min}$	$E_{max}/E_{min}$	Index
Calculation surface 1 Perpendicular illuminance Height: 3.000 ft	40.8 fc	12.98 fc	54.5 fc	4.70	7.80	S1
outside Light Spillage @ 20ft Perpendicular illuminance Height: 3.000 ft	11.9 fc	3.37 fc	22.8 fc	3.52	6.77	S2

Utilisation profile: DIALux preset, Default (Drive Aisles/Parking Areas)

Site 1

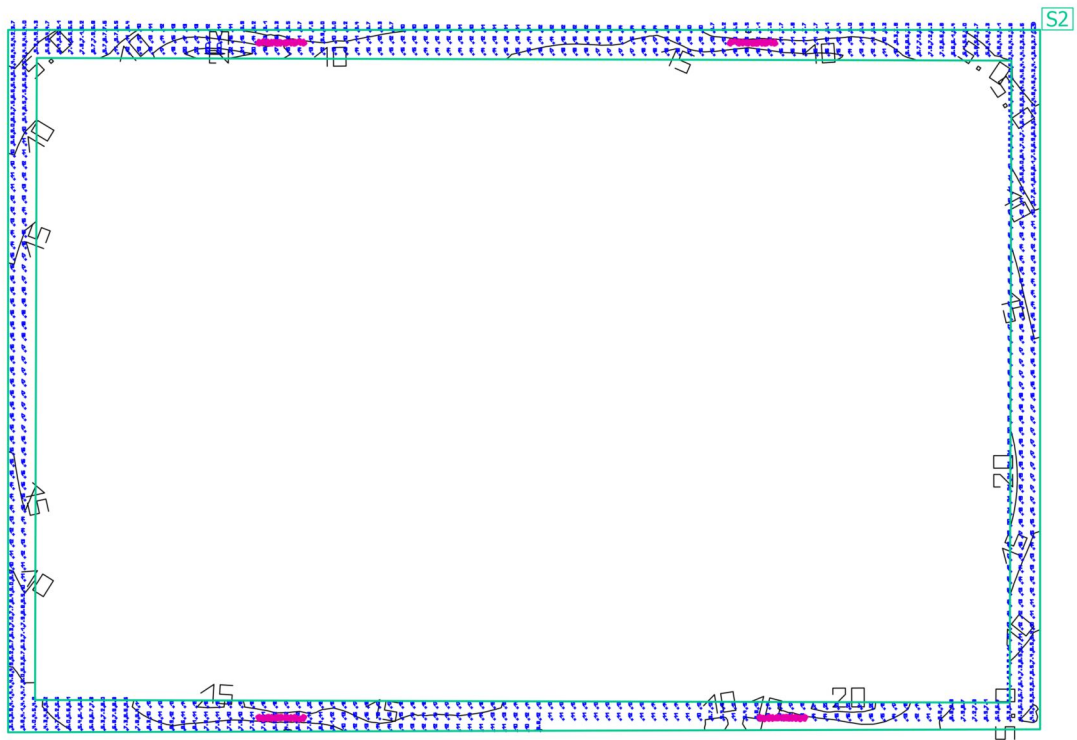
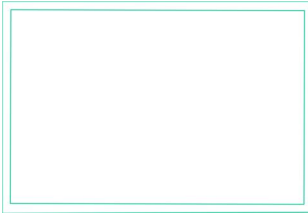
Calculation surface 1



Properties	$\bar{E}$	$E_{min}$	$E_{max}$	$\bar{E}/E_{min}$	$E_{max}/E_{min}$	Index
Calculation surface 1 Perpendicular illuminance Height: 3.000 ft	40.8 fc	12.98 fc	54.5 fc	4.70	7.80	S1

Utilisation profile: DIALux preset, Default (Drive Aisles/Parking Areas)

Site 1  
**outside Light Spillage @ 20ft**



Properties	$\bar{E}$	$E_{min}$	$E_{max}$	$\bar{E}/E_{min}$	$E_{max}/E_{min}$	Index
outside Light Spillage @ 20ft Perpendicular illuminance Height: 3.000 ft	11.9 fc	3.37 fc	22.8 fc	3.52	6.77	S2

Utilisation profile: DIALux preset, Default (Drive Aisles/Parking Areas)